

LED WORK LIGHT Installation

Instructions & User's Manual



WARNING
RISK OF ELECTRIC SHOCK
DO NOT OPEN



**To reduce the risk of electric shock do not remove cover (or back).
NO user serviceable parts inside. Refer servicing to qualified service personnel.**



The lightning flash with arrowhead symbol within an equilateral triangle is intended to alert the user to the presence of "dangerous voltage" within a product's enclosure that may be of sufficient magnitude to constitute a risk of electric shock.



The exclamation point within an equilateral triangle is intended to alert the user to the presence of important operating and maintenance (servicing) instructions in the literature accompanying the appliance.

1. Warnings

As with many other high-tech products, this LED series requires a bit of attention before you can use it. Please read the accompanying information carefully first.

- ▶ Don't stare directly into the light or shine directly into the eyes or another person as this may cause temporary loss of vision.
- ▶ Never disassemble the products, as all parts must be factory serviced insure proper operation.
- ▶ Don't change the part inside with other company's product.
- ▶ The LED light is to be mounted on the vehicle only in a vertical, bottom mounting or in a suspended position.
- ▶ After turning on the light, the body can be hot enough to have burn risk. So be careful when you have to touch the body after turning on the light long time.
- ▶ If there are any problem in the light, please just contact to the agent first.
- ▶ Repair have to only be carried out by qualified or properly trained persons.
- ▶ Use the supplied wire harness for electrical installation.
- ▶ The LED light must not adversely affect the performance of low beam, high beam, engine cooling or the driver's view.

2. Installation and Light angle adjustment

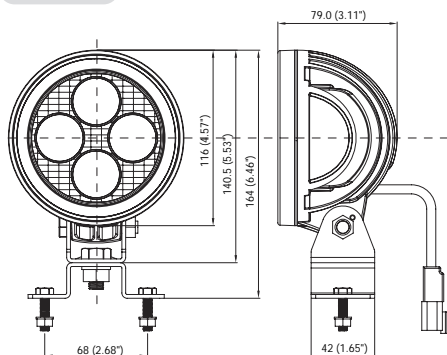
- 2.1 First, the wiring harness is preassembled and fully insulated and sleeved.
- 2.2 Lay out wiring so that all connections will have more than sufficient length.
- 2.3 Find a suitable location to mount the relay on the battery side of the engine compartment.
Make sure the mounting location is not exposed to water spray excessive heat, or moving parts.
- 2.4 Attach both power supply wires which have O-ring terminal to the battery
- 2.5 Plug car power connector to the socket which can supply a power.
- 2.6 Connect LED light with harness. (Connector can be changed by customer's request)
- 2.7 After turning on the light, if lamps do not light, check fuses and all wiring connections.
- 2.8 After adjustment, please insert the bolt(provided in the package) into the locking hole.

WD WL - 
WELDEX Work Light Item NO Watt Connector

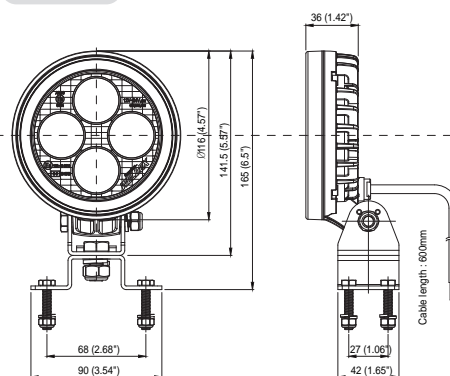
AM : AMP
DT : Deutsch
BD : Binder
W : Leadwire

3. Dimensions

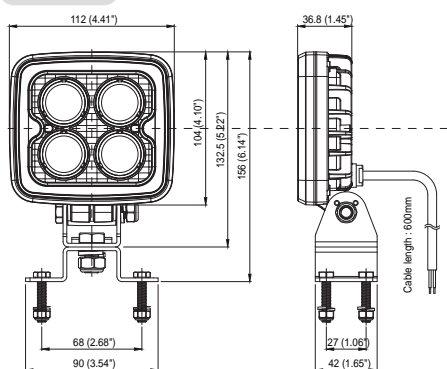
• WDWL-1R



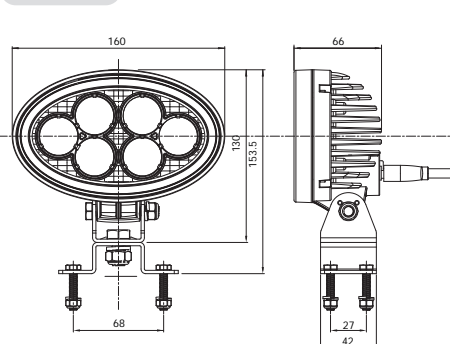
• WDWL-3R



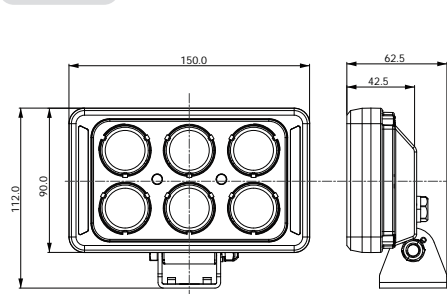
• WDWL-4S



• WDWL-5R



• WDWL-6S



• WDWL-9R

